



Meranti House 84 Alie St, London, E1 8QB

£3,100 Per Month



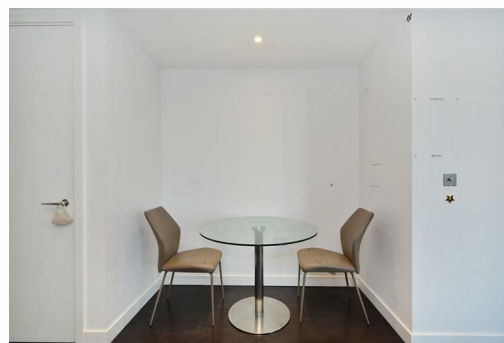
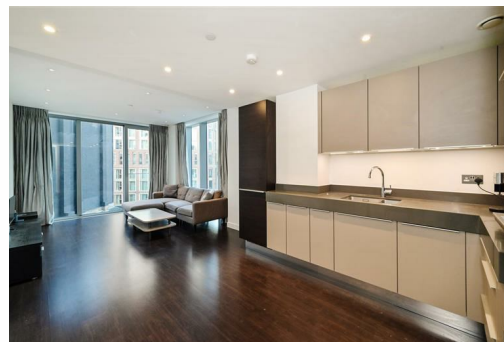
Seventh-floor modern one-bedroom apartment. Boasts a private balcony and is located within the luxury Goodman's Fields development. Residents will enjoy exclusive access to an array of amenities, including a state-of-the-art gymnasium, swimming pool, Jacuzzi, steam room, sauna, 24-hour concierge service, and a private cinema room.

The apartment features engineered wooden flooring throughout. The spacious double bedroom includes an en-suite bathroom, while the high-spec fully fitted open-plan kitchen is equipped with a dishwasher, induction cooker, and wine cooler. An additional WC is conveniently located for guests, and the light-filled lounge area seamlessly extends to the private balcony.

The bedroom features wooden flooring and a double-glazed window, complemented by fitted wardrobes for ample storage. The modern bathroom is fully tiled and includes a three-piece suite with a low-level WC, a wash hand basin with a mixer tap, and a bath with a mixer tap.

With double glazing throughout, this apartment offers both luxury and comfort in a highly sought-after location.

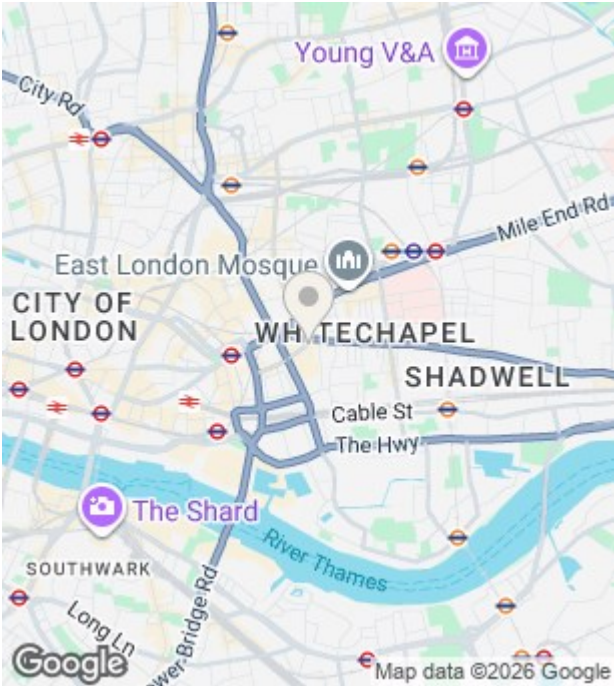
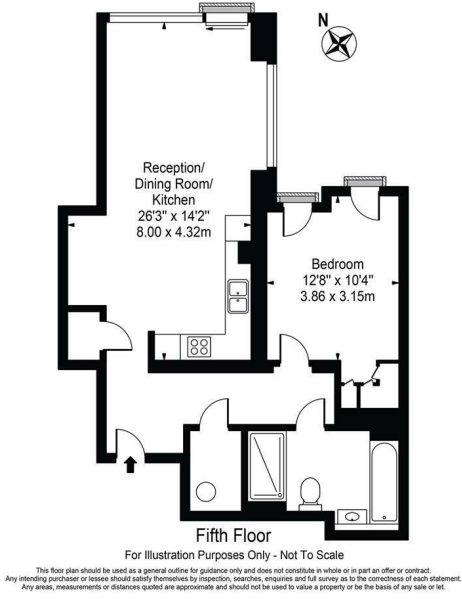
Close to Aldgate East Station with access to District, Circle and Hammersmith & City Lines.



- 24-Hour Concierge
- Cinema Screening Room
- Sauna & Steam Rooms
- Modern Integrated Kitchen
- Gymnasium
- Swimming Pool
- Wooden Flooring
- Close to Aldgate East Station



Merranti House
Approx. Gross Internal Area 721 Sq Ft - 66.98 Sq M



Energy Efficiency Rating		
	Current	Potential
Very energy efficient - lower running costs		
(92 plus) A		
(81-91) B		
(69-80) C		
(55-68) D		
(39-54) E		
(21-38) F		
(1-20) G		
Not energy efficient - higher running costs		
England & Wales	EU Directive 2002/91/EC	

Environmental Impact (CO ₂) Rating		
	Current	Potential
Very environmentally friendly - lower CO ₂ emissions		
(92 plus) A		
(81-91) B		
(69-80) C		
(55-68) D		
(39-54) E		
(21-38) F		
(1-20) G		
Not environmentally friendly - higher CO ₂ emissions		
England & Wales	EU Directive 2002/91/EC	